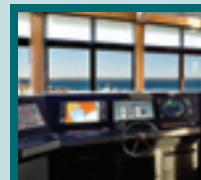
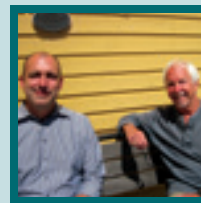


**REPORT  
TO THE  
COMMUNITY  
2015**

**NORTHWEST  
MARITIME  
CENTER**



***The sea is simply the  
best teacher we know.***



## FRIENDS & SUPPORTERS

While many years are memorable for one reason or another, we're fairly certain that for years to come we will look back on 2015 as a watershed moment for the mission of the Northwest Maritime Center. It was a year of solid execution with youth programs, sailing lessons, Chandlery sales, and the Wooden Boat Festival all at record or near record levels of participation and revenue. The Port Townsend School District completed the first year of its new place-based curriculum, and we launched the Race to Alaska, which captured the imagination of fans across the globe.

Beyond the list of activities, the Northwest Maritime Center continues to lead the way in how powerful maritime experiences can excite the minds and imaginations of young and old alike, from groundbreaking signature events and retooling public schools to co-locating programs so the experiences of a professional captain in our simulator can be enriched by a classroom full of kids attending a summer sailing camp. What's better is that all of this success and innovation doesn't get us closer to a state of stasis, but excites our collective enthusiasm for the next evolution for how we can engage our ever broadening community with the experiences of the sea. The success of 2015 is the fuel for the next phase of growth for the organization: In the next five years we will continue to grow and build capacity for programmatic and financial success for years to come.

Thank you for sharing your support and enthusiasm with us. 2015 was an incredible year. Buckle up—we seem to be accelerating from here.

All the best,

Steve Oliver, Board President  
Jake Beattie, Executive Director

**BOARD PRESIDENT  
& EXECUTIVE DIRECTOR**



**EDUCATION, BOATSHOP,  
PROGRAMS & HIGHLIGHTS**

# ADULT MARITIME EDUCATION

Whether new to boating or honing advanced navigation skills, there are year-round courses for every level of adult maritime education in our classrooms, on our Thunderbird sloops, and in the Pilothouse simulator. This year we taught classes to beginner sailors, recreational boat owners, offshore cruisers, professional merchant mariners, tall ship crew members, commercial fishing boat crews, and small boat educators.

Classes range in scope from private sailing lessons, small hands-on courses, and larger conferences—all of which are aimed at meeting the varied needs of our adult students in as many formats and course offerings as possible. Our U.S. Sailing Basic Keelboat classes are the backbone of our on-the-water sailing program. The Basic Keelboat course leads the way to membership in our Thunderbird Club, which continues our mission to get as many people as possible out on the water. In our classroom courses, we teach navigation and piloting, tides and currents, trip planning, marine weather, and watch standing for fishing boat crews. Our popular Pilothouse simulator classes range from radar and night navigation for recreational boaters to ECDIS, ARPA and radar observer for professional mariners. Along with Puget Sound Pilots using the Maritime Center for training, we have active partnerships with Crawford Nautical School and Washington Sea Grant.

2015 proved to be a successful year for our adult maritime education programs, with growth in course offerings and total enrollment. We are excited and encouraged to continue on this course throughout 2016 and beyond.



## Participant Numbers

Sailing Classes  
**196**

Navigation, Charting, Radar, & Weather Classes  
**91**

Boating Skills Intensive Classes  
**52**

Small Boats Conference for Educators  
**76**

HawesFest Tall Ship Crew Courses  
**17**

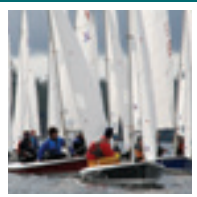
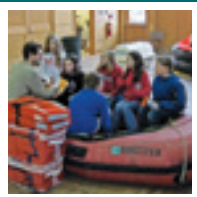
Washington Sea Grant Partnership Course  
**22**

# SUMMER YOUTH PROGRAMS

Our nine, week-long summer sailing and boating camps for kids are the heart and soul of our mission. Each week, the Northwest Maritime Center offers morning and afternoon *Learn to Sail* classes where kids get to sail their own Opti dinghy (or V-15 for more experienced sailors). Staff remains alongside in safety boats, but students sail their own boat on day one. This initial experience, in their own sailboats, is the essence of powerful life experiences and maritime learning— self-sufficiency and practical skills in a fun, safe, and encouraging environment.

2015 saw the expansion of our classes to accommodate an increased enrollment of 280 students, which leapt from our previous maximum of 240. Our *Messing About in Boats* camps for younger students also had a boom year, with sessions on pirates, ship building, and marine life. Additionally, students learn about rowing, power boating, and sailing.

Our commitment to getting people of all ages on the water continued to grow with 688 passengers on our free *Martha J* boat tours. Additionally, over the course of ten summer Saturdays, 485 visitors to the Center were able to experience piloting a virtual boat in our state-of-the-art Pilothouse simulator.



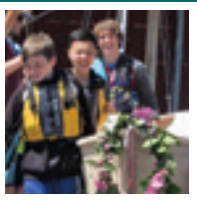
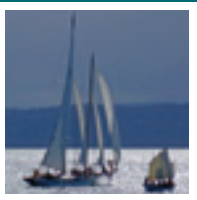
## Student Numbers

Sailing Classes  
**104** *Beginners*  
**53** *Intermediate*  
**31** *Advanced*

Percent of  
 Scholarship  
 Requests Fulfilled  
**100** (\$3,215 for  
 33 Campers)

Summer Instructors  
 Who Were Past  
 Program Students  
**8 of 9**

Messing About In  
 Boats Campers  
**93**



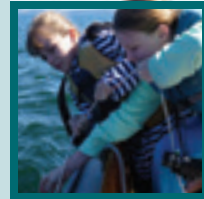
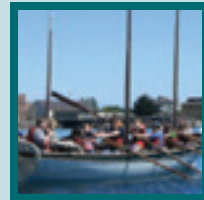
# SCHOOL PROGRAMS

The Northwest Maritime Center's school programs continue to keep our campus bustling during the year. Off the water, we offer engaging land-based programming that includes our Pilothouse simulator, a working boatshop, and classroom activities. On the water, our students sail our longboats, Thunderbirds, and the *Dorjun* and *Martha J.* Students develop confidence, work as a team, explore the marine environment, learn maritime skills, and gain exposure in future career opportunities.

Community partnerships are growing and continue to be at the heart of our school programming. One of our strongest partnerships is with the Port Townsend School District, with whom we collaborate on the Maritime Discovery Schools initiative. We are actively creating more place-based maritime education through teacher training and new curriculum development.

We continue to grow our partnership with Sound Experience and Port Townsend Marine Science Center (PTMSC). In March 2015, seventh-grade students from Bainbridge Island's Woodward Middle School participated in a two-day program of hands-on, on-water experiential learning. Other programs include our summer camp collaboration with PTMSC's Marine Biology Afoot and Afloat, which exposes students to inquiry-based science aboard our Thunderbird sailboats.

In 2016, we are working to reach even more students through strong collaborations and additional partnerships. Improving and expanding our curriculum, while still meeting the needs of our long-term school groups, will be a high priority in 2016. School programs at the NWMC are working to become the region's best source for maritime-based experiential learning, while at the same time remaining an integral part of the education landscape within our home community.



## SCHOOL PROGRAMS BY THE NUMBERS

### SPRING PROGRAMS

**Maritime Education Learning Immersions: 126 students, 5,752 program hours**

*Blue Heron Middle School, 63 students, 3,314 program hours*

*Chimacum Middle School, 63 students, 2,438 program hours*

During the months of May and June, seventh graders from Chimacum and Blue Heron Middle Schools participated in seven- and eight-day maritime education learning immersions.

### FULL-YEAR PROGRAMS

**Bravo Team: 9 students, 976 program hours**

Bravo Team, comprised of students from Port Townsend School District's OCEAN program, teaches longboat seamanship, team building, and environmental experiences. Throughout the school year, students work together to voyage on Port Townsend Bay, maintain the longboat, learn marine trades, and discover the natural history of the Salish Sea. They wrap up the year with an overnight voyage.

**Girls Boat Project: 7 students**

The Girls Boat Project had seven high school girls engaged in maritime trades on and off the water in this unique partnership with Port Townsend School District. Participants learned woodworking, boatbuilding, and maritime skills from strong female role models, in a safe and fun atmosphere for learning traditional skills.

**Port Townsend High School Maritime Studies Class: 18 Students**

Maritime Studies students learned to sail Thunderbirds, the *Dorjun*, longboats, and also used the Pilothouse simulator as part of the curriculum. The Maritime Studies class is offered all year as a career technology education class at PTHS.

## Program Participants

Evergreen School

Hansen Elementary

Hyla Middle School

Jefferson Community School

Peninsula College  
Upward Bound

PTMSC Afoot & Afloat Camp

Spring Street International School

Woodward Middle School

**Totalling 298 students!**

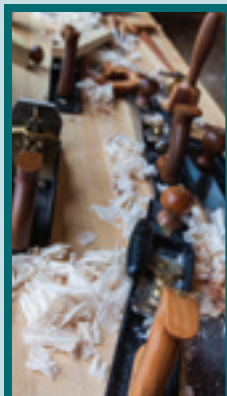
# WBF BOATSHOP

At the Wooden Boat Foundation Boatshop, visitors can see, hear, smell, and touch the magic of traditional and contemporary boatbuilding and repair. In the Boatshop you can get involved by volunteering—picking up skills as you help with our yearly fleet maintenance, and learning about contemporary boatbuilding. You can help as we prep for our build-your-own-boat classes and help teach and assist the students in our youth school and summer programs. The Boatshop is an active, working shop with varied projects moving in weekly.

2015 began with leasing the entire shop to the Northwest School of Wooden Boat Building (NWSWBB) from January through June. During this six-month period, the Boatshop temporarily shifted its focus to full-time involvement in helping to train prospective professional boat builders. Eighteen full-time students spent this time building a variety of boats from 12 to 22 feet. The opportunity to work with NWSWBB was a partnership we excitedly welcomed.

Additionally, 2015 saw the continuation of our popular build-your-own-boat classes through partnerships with Pygmy, SCAMP, CLC and, brand new in 2015, a build-your-own-surfboard class with Grain Surfboards. A trio of new classes was also launched in 2015: Introduction to Shop Tools, Introduction to Boat Building, and the Day Use Program.

Among the many highlights of the Boatshop's year, our youth programs always seem to rise to the top. By the end of our students' time in the shop, they have safely learned to use drills, saws, and glue, as well as build a complete boat and launch it. The pride these students exude prove to us that for many, their experience in the Boatshop has been a transformative one.



## Boatshop Numbers

Total Volunteer Hours  
**1070**

Total Craft Built, Youth Programs  
**4**

Total Build-Your-Own-Boat Classes  
**7**

Total Participants, Build-Your-Own-Boat Classes  
**50**



# MARITIME CENTER EVENTS



## **Shipwrights' Regatta**

2015 celebrated the 25th anniversary of this well-loved race. Only the bravest come out to compete in this February race that officially kicks off the start of the sailing season. The Shipwrights' Regatta has long been about getting as many people out on the water as possible, no matter what their sailing experience, and introducing them to the sport of sailing.



## **Classic Mariners' Regatta**

The Classic Mariners' Regatta is all about beautiful wooden boats, high-caliber sailors racing their hearts out, and a friendly atmosphere that is more potluck than yacht club. Since 1984, the Classic Mariners' Regatta has animated Port Townsend Bay with the Wooden Boat Foundation spirit that is quintessentially Port Townsend.



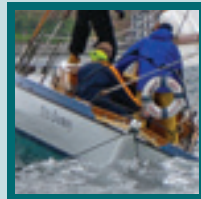
## **Wooden Boat Wednesdays**

Wooden Boat Wednesdays, which takes place on the third Wednesday of each month, brings together a broad range maritime-based presenters to the Northwest Maritime Center. These events are free to attend and have been well received by the community.



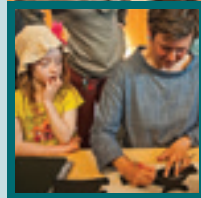
## **Pocket Yacht Palooza**

This two-day festival is a celebration of unique small-craft and camp cruising watercraft. Annually, over half of the boats in attendance are sail-powered. Others are rowed, paddled, or powered by modest engines. This event is free to the public and organized by Port Townsend Pocket Yachters.



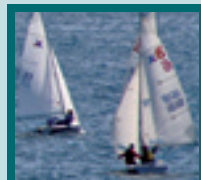
## **Annual Navigator Brunch**

Attracting both long-time supporters and new friends, the Navigator Brunch is a celebration of our mission and the people who help bring it to life. It's an inspiring fundraiser and a fun way to get to know the organization. After all, we do kick things off with mimosas. 2016's theme is *Momentum*—join us on July 23rd and find out why!



## **Artists, Authors & Gallery Showings**

Throughout the year we host a number of artists, authors, and other presenters on a variety of topics for a variety of audiences. The Tretter Gallery also rotates artists throughout the year.







# MARITIME CENTER CAMPUS

2015 was the year that confirmed what we, as a staff, knew was coming—there is no slow season at the Northwest Maritime Center. Winter brings a number of educational series hosted by an array of organizations. For the sixth straight year we hosted the Captains' Licensing Class series and hosted a new educational opportunity called HawseFest, while our partner organizations—PT Sailing Association, Point Wilson Sail & Power Squadron, and Rat Island Rowing and Sculling Club—continued to offer classes for recreational mariners. Additionally, the Robotics Club used our facility throughout the winter months in preparation for their competition season. We also welcomed maritime educators who convened for the Teaching With Small Boats Alliance Conference, and hosted a Gwaii Haanas remote orientation. This was all before we officially kicked off summer with the inaugural Race to Alaska and our 39th Wooden Boat Festival!

Along with our smaller private events and maritime education classes, the campus hosted several artist workshops, as well as our first live NPR radio broadcast, *West Coast Live*. We rounded out the year with the opportunity to host the Puget Sound Naval Shipyard for their three-day conference—a relationship we hope will continue to grow.

As we ready the campus for summer—which unofficially starts when the chairs go out on our First Federal Commons—we look forward to welcoming locals and tourists to relax on the waterfront and enjoy the spectacular view. Plans are underway to welcome more visitors through our facility with increased art shows in the Tretter Gallery and by continuing to grow relationships with community organizations and our local, state, and federal agencies.



## Event Numbers

Weddings  
**19**

Fundraisers  
**10**

Celebrations of Life  
**4**

Professional Talks & Community Events  
**33**

Local Business & Private Events  
**32**

Weeks of Professional Maritime Education Classes  
**8**

## GEORGE & ANNA SHAFFER

George and Anna Shaffer of Ketchikan, Alaska, have been active in the Ketchikan arts community with Anna currently serving as the President of the Board of Directors of the Ketchikan Area Arts and Humanities Council, and George as a percussionist in the Ketchikan Community Concert Band. Both were active in Ketchikan sailboat racing for many years.

We asked the Shaffers what inspired them to become NWMC members and they told us it was the quality of the programs and community pride in events like the Wooden Boat Festival. The Race to Alaska, involving both Port Townsend and Ketchikan, was the “icing on the cake!” The Shaffers housed some of the 2015 race organizers and were at the finish line for many of the first finishers. Also important to them is the emphasis on small boats, workshops for boat owners, and the youth programs.

In the past year, the Shaffers relocated to Port Townsend, and hope to increase their involvement at the NWMC as they transition to full-time Port Townsend residents.



## ANNIE TOO

*Annie Too* was built in 1956 by Bill Lapworth and Willis Boyd for the 1957 Transpac. In 1962, she was bought by the Rixford family and finished 4th in the 1963 Transpac. She also won the Class B category in the 1968 San Diego-Acapulco Race. She was raced continuously for 35 years in San Francisco. She is strip-planked African mahogany with fir plywood decks and cabin, finished with teak trim. In 1994, the Pike family brought her to Port Townsend and she has been racing, cruising, and day chartering ever since.

With honoring *Annie Too*, we remember with deep fondness her owner, Ted Pike—longtime board member, maritime luminary and all-around nice guy, who sadly passed away last summer. Ted had a singular ability to make you feel like he was absolutely delighted to see you, and that what you said mattered to him. In his physique, his presence, and his reputation Ted was a large figure in the maritime scene both here in Port Townsend and across the country, working for Edensaw and Wooden-Boat Magazine and serving on the board of the NWMC and Wooden Boat Foundation.

## **DON MATHROLE**

One of the most endearing qualities of the Boatshop is the genuine welcoming feeling one gets simply by walking in the door. Staff and volunteers alike go out of their way to take a moment to chat, answer questions, and help those who wander in. We used to think that this tone of welcomeness and inclusion would originate from the Boatshop manager and filter down through the staff and volunteers. We have come to realize that we are all simply following the lead of Don Mathrole. Don is many things for this organization—truck driver for the Chandlery as he picks up pallets of line from SeaTac, boatbuilding extraordinaire for our school program students, and an answer to every possible need in the Boatshop. Most significantly, Don is a counselor, mentor, and patriarch.

Along with Don's presence in the Boatshop, his expertise and character embody and strengthen the values and traditions upon which the Wooden Boat Foundation Boatshop was originally founded. It is with exceeding pride that we honor Don Mathrole as 2015's Volunteer of the Year.



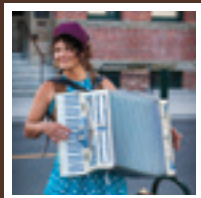
## **NWMC SOLAR PANELS**



Thanks to a generous lead gift from the Martin-Fabert Foundation and the good work at Power Trip Energy, the Northwest Maritime Center now boasts a 24kw solar panel array on the roof of the Weissblum Maritime Heritage Building. In total, the new panels will produce more than 10% of the power needed for the building, with room remaining to add panels and increase our usage of clean, sustainable energy.



**PREMIER EVENTS &  
CHANDLERY RETAIL**



# WOODEN BOAT FESTIVAL

Wooden Boat Festival is a celebration of all things wooden boat—from traditional craftsmanship to modern technology. It’s a celebration of adventure, songs of the sea, and most significantly, the opportunity to get people out on the water where they can experience the romance and beauty of a traditional wooden boat under way.

Among the many ways to get out on the water during the Festival, either rowing and sailing a longboat, paddling a kayak, touring the boats in the harbor, or sailing on a tall ship, 2015 saw the addition of a paddleboard pool where Festival goers could try this fun and fast-growing sport in a safe way. Back on land, the Festival grounds hosted thousands of people engaging in presentations, demonstrations, workshops, and entertainment by legendary sailors, adventurers, craftspeople, and shipwrights.

2015s Festival also featured our first pop-up maritime museum, which highlighted an array of beautiful ship models, our new partnership with the Western Flyer Foundation (we even had Steinbeck’s desk on display!), and a new environmental plan that helped us remove 99% of the single-use plastic cups at Bar Harbor.

Along with schooners racing against the backdrop of Mount Rainer, hundreds of boats of all sizes parading past the shores, the stunning mornings, and the dancing till wee hours, there is magic everywhere during Wooden Boat Festival. The 40th Wooden Boat Festival will offer more events, more food and drink vendors, and more of the wonderful traditions from the 39 festivals before it, and which generations of people have grown to love.



## WBF SPONSORS

### \$7,500 & ABOVE

Port of Port Townsend  
Port Townsend Leader  
Resort at Port Ludlow  
SEA Marine  
Wilder Auto

Platt Irwin/NTI  
Port Townsend Brewing  
Company  
Sirens  
Waggoner Cruising  
Guide

### \$5,000 TO \$7,499

Center for Excellence  
for Marine  
Manufacturing &  
Technology  
COHO Magazine  
Edensaw Woods  
First Federal Savings  
and Loan  
Harbors Magazine  
The Hydration Station  
Small Craft Advisor  
WoodenBoat  
Magazine

### UP TO \$2,499

48 North  
Admiral Ship Supply  
Alba Creative  
Artshots  
Barkley Sound Bags  
Carl’s Lumber  
Goodman Sanitation  
KPTZ  
Inland Waters Press  
OlympusNet  
Rainshadow  
Properties  
Soak on the Sound  
SOS Printing  
Sunrise Coffee  
Vessel Assist

### \$2,500 TO \$4,999

Fisheries Supply  
Lee Valley Tools  
Northwest School of  
Wooden Boat  
Building

## 39th WBF Presentation Attendance

---

---

NWMC Rooms  
**3870**

Sail Loft  
**150**

Boat School  
**720**

Woodworking  
**400**

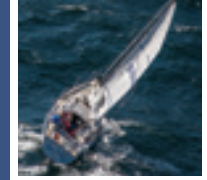
Boat Yard  
**300**

---

---

Total Attendees  
**5440**

Presenters &  
Speakers  
**77**



# RACE TO ALASKA

2015 will forever be known as the birth year of the Race to Alaska. From our first conversation about this idea to the start of the inaugural race, we never truly thought people would find a motor-less, unsupported race to Alaska a good idea. With 750 cold-water miles between Port Townsend and Ketchikan, no support, no motors, and second prize winning a set of steak knives, we kept our expectations modest and went for it. It wasn't long before we knew we might be on to something. With 2000+ racers and fans attending the pre-race Ruckus, the trend of proving our modest expectations wrong officially began.

The inaugural R2AK caused the first 4:00 a.m. traffic jam in Port Townsend history, generated 11 million website hits, was watched by people from all over the world, and put a little mentioned class of adventure sailors in the international spotlight. Race to Alaska's first year provided not only an unprecedented challenge, but a celebration of the human spirit, courage, and a viewership larger than we could have imagined.

In 2016, it's more crews, more boats, and no new rules. The biggest variable remains the weather—there was unprecedented wind last year—and 2016's teams are gambling on all sorts of crazy, varied strategies. Applications to race have nearly doubled from last year, with teams from as far as Australia and France vying for a spot on the start line. Our sponsorship partnerships are also growing in number and amount of support committed. We are actively ramping up our media and outreach efforts, organizing live video streaming from the race course, and will soon launch a new R2AK website. With our expanded pre-race Ruckus schedule and the start horn sounding at 6:00 a.m., we expect another record-breaking traffic jam come June 23!



## R2AK SPONSORS

### \$7,500 & ABOVE

- First Federal Savings & Loan
- Fisheries Supply
- Greater Victoria Harbor Authority
- Jefferson Healthcare
- Un-Cruise Adventures
- Vigor Industrial

### UP TO \$7,500

- Alaska Magazine
- Baranof Fishing Excursions
- Compass Courses
- Ketchikan Visitors Bureau
- New Belgium Brewery
- Ocean Rodeo
- Old Salt Merchants
- Sage Marine/Spyderco
- Sailor Jerry Spiced Rum
- Schilling Cider
- Shearwater Resort & Marina
- Small Craft Advisor
- West Coast Insulation

## 2016 R2AK Outlook

*(as of April 15)*

Teams Registered  
**67**

Teams Racing to  
Ketchikan  
**48**

Teams Racing to  
Victoria  
**19**

Total Crew  
**148**

# WOODEN BOAT CHANDLERY

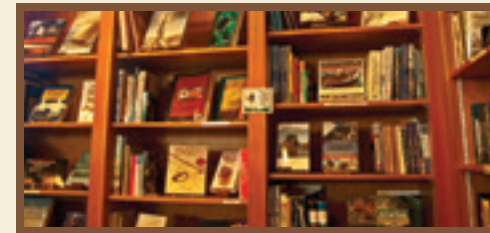
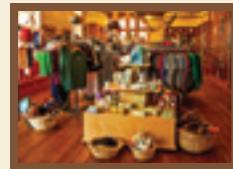
The Chandlery has grown into a fun, exciting place to shop and visit, but it's also an important part of how we connect with our partners, tourists, locals, and program participants. Many visitors to Port Townsend and the Northwest Maritime Center start their day in the Chandlery, where we are the public face of the larger Maritime Center campus.

2015 saw increased revenue across all of our primary audiences—tourists, locals, and shipwrights. We served everyone from three-year-olds taking their first Lil' Scuppers camp, to adults building their first kayaks and professional shipwrights working on heritage tall ships. The result was our best year ever.

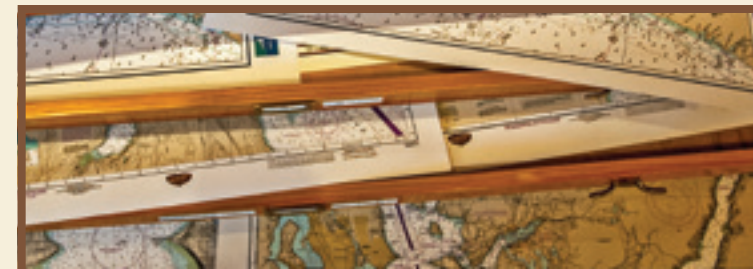
We got here by creating relationships with companies like Spyderco and Fisheries Supply. We supported the Western Flyer Foundation through product sales. We created camp shirts for kids, supplied charts and books for classes, and decor and displays for NWMC events. We catered to locals by offering affordable everyday gear and listening to requests. We continue to carry locally made products like Kendon's beloved sail bags, and we feature local authors and artists.

The Chandlery also supported several major projects in the maritime world. Our rigging, hardware, and supplies are now represented on the *Cloudia* and the *San Salvador*. In total, we sold 88,679 feet of line—almost 18 miles!

The Chandlery runs thanks to our staff, and our dedicated, capable volunteer team: Alice King, Mari Friend, John Hazen, Sandra Boughman, and Patti Mulrone. In total, these dedicated volunteers donated over 1,760 hours to the Chandlery last year.



*All sales at the Wooden Boat Chandlery support the mission and educational programs of the Northwest Maritime Center.*



## Chandlery Retail Totals

Total sales  
**\$365,476**

Sales Increase over 2014  
**\$23,612 (7%)**

2015 Total Profit  
**\$26,620**



**MEMBERS, DONORS,  
PARTNERS & SPONSORS**



**\$100,000 & UP**

Anonymous

**\$25,000 TO \$99,999**

Discuren Charitable Foundation  
Martin-Fabert Foundation  
Satterberg Foundation  
Jim & Nelly Tretter  
Herb Weissblum

**\$10,000 TO \$24,999**

George & Ann Fisher Forest Foundation  
Foss Maritime  
Ed & Laura Littlefield  
Puget Sound Pilots  
Michelle Sandoval & Marty Gay  
Sharon & Phelps Witter

**\$5,000 TO \$9,999**

Anonymous  
Gary & Gay Eisenberger  
Glaser Foundation

Bruce McCaw  
Microsoft Matching Gifts Program  
Alex & Elena Spear  
Mary Ann & Vince Verneuil  
Wells Fargo Bank

**\$1,000 TO \$4,999**

Tom Alberg & Judi Beck  
Anonymous  
Sharon Black  
Peter Bonyun & Beth Lorber  
Anne & Bob Cameron  
Tom & Marie Cawrse  
Sam & Joan Crawford  
daVinci Days  
James Dahl  
Bernard & Mercedita Del Valle  
Kristine Easterday & Mike Heckinger  
Edith Grobe Foundation  
Nancy Erley & Lynn Terwoerds

Estate of Dorothy Fowler  
Mari Friend  
Peter Geerlofs & Glenda Hultman  
GVHA  
Roger Hagan & Lynn Marlow  
Phil Hallin  
Jim & Mary Hirshfield  
Ryan & Marion Huxtable  
Island Foundation  
Jamestown S'Klallam Tribe

Jeffrey Johnson  
Raymond F. Kemery  
Cristy Lanfri  
Frank & Cynthia Lawson  
Howard & Suzanne Learned  
Chelcie & Kathy Liu  
Brad & Christina Mace  
Carla Main & Brad West  
Matson Foundation

James & Fran McCully  
Dr. Dee & Sara Meek  
Stuart Mork & Laura Cooper  
Kris Morris & Brig Knauer

Rena & Earl Murman  
Ralph & Anne Nelson  
Mark Nowlan  
NW Outward Bound  
Stig Osterberg  
Jock & Sonchen Patton  
Port Townsend School of Massage  
Nick & Libby Reid  
Rodney Paul Rochelle  
Lila & Ron Schmidt  
Seattle Yacht Club Foundation  
Rick Segal  
Bruce & Corrie Seton  
Brent Shirley  
Rajeev Singh  
Carlyn Stark  
Virginia Thompson & Stewart Pugh

George & Joan Thomsen  
Norm & Carin Tonina  
Garry & Jamie Wohlgemuth  
Rick & Debbie Zajicek

**\$500 TO \$999**

Kim Aldrich  
Forrest & Carol Aldrich  
Anonymous  
William & Sandra Cammarano  
Wendy Chapman  
Barbara Clark & Gary Dutcher  
Dave & Carol Elliott  
Len & Katy Friedel  
Ron & Caryl Gentry  
Hammer & Son  
Gee & Janet Heckscher  
Sue Hoover  
Julie Keim  
Carol & Jack McCreary

Julie & David McCulloch  
Leah Mitchell & Nancy McLachlan  
Northwest Yacht Brokers Association  
John & Elaine Palmer  
Randy Repass & Sally-Christine Rodgers

Dianne Roberts & Jim Whittaker  
Kate Roosevelt & Caroline Maillard  
Paul Stafford & Michelle Peters  
Josh & Keely Stranahan  
Peter & Meredith Wagner  
John & Marilyn Warner  
Edensaw Woods

**\$250 TO \$499**

Pat Anderson & Rich Gihring  
Anonymous  
Don & Kathy Beattie

Prentice & Heidi Bloedel  
Jerry & Virginia Bohannon  
Phil & Lois Braden  
Mel & Luz Carnes  
Larry & Donna Coffey  
Piper & Crissy Dunlap  
Dick & Alysa Ellison  
Emerald Marine

Carpentry  
David & Margaret Engle  
Jim & Karen Erickson  
Patricia Farmer  
Sugar Flanagan & Leslie McNish  
Aldrich's Market  
Bill & Peggy Harju  
Charles Houston  
Bill Hurley  
Patrick M. Irwin & Holly Rockwell-Irwin  
Janicki Industries  
Jon & Joyce Kaplan  
Gary W. Kennedy  
David & Alice King  
John & Lisa Lynes

John Maher & Melinda Trenary  
Ken & Cindy McBride  
McClanahan Lumber  
Barry McLane & Donna Frary  
Jeff McLean & Dian Campbell

Elisabeth Mention  
Kathleen Mitchell & Scott Landis  
Ron & Elizabeth Moller  
John & Joyce Mottola  
Perry & Shirley Neichoy  
Donald & Mary Lynn Pannen  
Ravenscroft Inn  
Port Townsend Sailing Association  
Steve Ramsey & Ann Jones  
Rat Island Rowing & Sculling Club  
Susan Rice  
Dave Robison & Sheila Westerman

Mary Rothschild & Ross Anderson  
Schooner Martha Foundation  
George & Anna Shaffer  
John & Katherine Simpson  
Don & Barbara Smith  
Laurence & Carol Somers  
Don & Sharry Stabbert  
Karen L. Sullivan & Jim Heumann  
The Boeing Company  
Gift Matching Program  
Pete Thompson  
Therald & Betty Todd  
Bob Triggs  
Velocity Port Townsend

Teresa Verraes  
Elaine Wells  
Renate Wheeler  
Ryan & Shannon White

**\$100 TO \$249**

Martina Abba-Richards  
ADA Boats  
John & Una Anderson  
Ken Anderson  
Anonymous  
Leah Applewhite & Fritz Feiten  
Eric & Gabriella Ashford  
Fred & Irene Backer  
Joseph Baier  
Ann & John Bailey  
Joanne Bailey & Dale Nordlund  
Carol Baker  
Bruce Barnes  
Paul Barrow  
Rob & Siri Birman  
Blyn Boat Club  
John Bodger & Selden McKee  
Mary Lou Boegehold  
Charles & Luan Borgeson  
Sydney Bowie  
Bill Bradley

Shirley Broughton & Joseph Calodich  
Cameron M. Brown  
Martin Buccieri  
Michael & Judy Buchanan  
James Buckley & Bonnie Hanson-Buckley  
Dan & Lys Burden  
John & Sherry Burke  
Scott & Judy Bushnell  
Karen Campbell  
Holley & Todd Carlson  
Judy & Mike Cavett  
John Chiles  
William Christensen  
William T. Clark  
Peter Clough & Jill Riebesehl  
Cathy Cloutier & Scott McKay  
Frantz (Andy) Coe  
Cate Comerford & Stephanie Savel  
Michael Conger  
George Costakis  
Jeff Covert  
Susan Cronshaw

Jeff Culver Stan & Sigrid Cummings Craig & Lisa Curtis Bill & Chris Dean William Deutsch & Marie Pavish Adam Dovalina Susan Doyle & Harry Doyle III Bonnie Duncan Peters Tom & Ben Dyer Steven Epstein & Charlene Kahn Charles Erskine Graeme & Janna Esarey Bill & Ellen Farr Joyce & Gary Fell First Federal Barcy Fisher & Tina Podlodowski Monica Fletcher & Steve Evans Arthur Fournier & Laurie Calderhead Frederickson Electric Ellen & Douglas Frick	Jerry & Celia Fry Celia Fulton Walden & Michael Buse William V. & Kate Gamble Jaime, Laisha & Karmen Garcia Bruce & Virginia Garman Charles & Amy Garrett DM Gee Tom George & Sarah Spaeth In Memory of Leonora Barca Maranan William Good Tom Graham Anne & Jay Greer Ken Greff Kirk Gresham Ruth Gressley Jim Griffing Phillip Grinton & Marcia Coleman Brooks & Barbara Hanford Kay Hart	Pete & Deborah Helsell Chuck Henry Bill & Penelope Higgins Mark Hillman Rachel & Richard Hill David Hinchliff Martyn James Dallas Jasper Chris Jones & Eileen Cooney Anne Kearson & Brian Morningstar Leigh & Steve Kennel Candy Kerr & Charlie Horsman Bill Kindler David & Jeanne King Mike & Johanna King Barbara & Hans Knigge Doug & Sandee Korlann Marta Krissovich & Marty Gilmore Dick & Sue Kutsch Dr. & Mrs. D. Kuznetsov	William T. Ladd III & Lili Ladd Alice Lane Lynda LaVigne Justin Lemire-Elmore Robert & Edie Leporati David Lesser Devon & Janet Liles Marty Loken Richard Lynn & Anne Richardson Kate MacMillan Robert Maguire Ellen & Michael Mallett Jak Mang & Corine De Boer Jim & Karen Manier Bob & Sue Marett Marketech International Jim & Clara Mason Don Mathrole John Matthews, MD & Emily Matthews Anthony Mauhar Jr. Jim Maupin & Nora Petrich Sandy McCrae	Kim McCullough Denise & Terry McHugh John McKenzie Phillippe & Marian Meany Merck Gives Back Employee Giving Laura & Manes Merrit Lynn & Bill Meyer Bob & Molly Miller Beth Miller L. Mishefski Steve Moore & Gigi Callaizakis Richard J. & MaryAnn Moore Dale & Susie Moses Mt. St. Helens Motel Steve Murphy Francis & Suzanne Murray Sara Neill & Will Taylor (Bo) Neill III Gary A. & Elaine A. Nelson Thomas Nielsen Jan Nix & Zeryn Zaire	John & Aime Joe Palmer Barb & Jonathon Parent Molly Parker & Jim Emery Lisa Parshley & Tom Allen Forrest Peebles Ron Peterson & Lanette Inman Robert Peterson Robert & Betty Petrie Anthony & Julie Piazza Kees Prins Michael Quandt Quilcene Lions Club Rich & Geralynn Rackowski George Randels Linda & Peter Rhines Tom Richardson & Susan Biskeborn Judith Rickard & Geoffrey Braden John & Linda Robinson	Thomas & Barbara Rook Paul & Roberta Rovner Jon Schorr & JoAnne Tompkins Symbolyn Sebastian Carl & Sue Sidle Jeffrey A. & Celine Smith Richard & Betty Southard Rick Southard, Jr. & Nancy Martin Katrina Y. Spear Ray & Janice Speck Carolyn "Ace" Spragg Mark & Trish St. Oegger Dan & Dorothy Stengel Richard & Deanna Stewart Mary Grace Swift & Bob Steele William Symes Jeff & Marla Tangen Ann Taylor	Cindy Thayer Ken & Elizabeth Thompson Dick & Mare Tietjen Brooks Townes & Judy Rosen Peter & Deborah Townsend Barney Truman Greg Tusing Doug & Nancy Van Allen Michael Vlahovich Debbie & Michael Wardrop Philip Wasterval Jay & Mary Ann Watson Brian Webb Lynne Webster John Weiss David & Connie Wheeler Marsha Wiener Andrew & Sarah Wilke Jamie Will Scott & Debra Wolfe	Dan & Caridad Woltz David & Jeanette Woodruff Richard Ying Paul & Andrea Zeusche Leonard & Gitte Zweig <b>UP TO \$99</b> Claire & John Acord Richard Adamo & Nikki Nino Bryant Adams David Albright Geoff Alexander Chris Allen Krister Allen Susanlynn Allen Kurt Aluzas Amazon Smile Foundation Cima & Christian Andrews Carrie Andrews Jerry & Peggy Armstrong Janeen Armstrong James Armstrong Elizabeth Arnel-Minter	Randy Arnest John & Linda Atkins Donald C. Austin Ivan Bacica Margaret & John Backer Lance Bailey Ernie Baird Martin Baker & Donna Lee Klemka Lloyd L. Baldwin Simeon & Mary Baldwin Ed & Loretta Bancroft Mike Bancroft Jim Barbour Jim Barrett Dick Bartsch Tom Bashaw Jen Bates James Batey Mark Bauserman Heidi Baxter Jake Beattie & Jean Scarboro Hal Beattie & Bekah Ross Mark Beaufait	Paul Becker & Lisa Crosby Charlie Becker Dale Beech & Edith Duttlinger Bob Beegle Court Bell Arne & Judy Bentzen Vicki Beres Robert Bergstrom Mark Bickford Gordon & Catherine Bilyard James Bird Grant Bishop Al & Gena Black Tim Black Jim Blaiklock Jennifer Blais John Blakemore Paul & Sheri Bloch Jeff & Joli Bock Janine Boire Brian Boland Stephen Borgstrom Allegrad & Jed Bothell Kim & Susan Bottles David Bourne	Jody Bower Richard Boyce-Sargent Frank Brennan Jessica Breznan Herb Bridge Craig Britton & Carleen Bruins Bill & Bonnie Brock Ray Brown & Anne Thompson Tom Brown Russell & Ashlyn Brown David Brubaker Bob Bryan Larry & Jan Bughi Christine Burnell & Ken Uphoff Charlotte Burnham & Courtney Garcia Steve & Kristine Burns Patricia M. Burns Carol Cahill Lee Caldwell Craig Campbell Doug Campbell Craig Canine & Myla Sherburne
---	--	--	---	--	--	---	--	--	---	---	---

John Carey Nicholas Carey Mike Carlson Michelle Caron John & Lucinda Carscadden Lisa & Dennis Cartwright Zach Carver Esko Cate Randle & Vickie Chambers Gary Chartier Larry Cheek Doug Chichester Justin Childs Cody Chorba-Pulkka David Christensen David Chuljian & Susan Disman Mike Coffeen Paul & Patti Colaizzo John Collins & Carol Graves Bill Coltrin Commander's Beach House Nick Conedera	Ethan Cook & Mary Dilles Priscilla & Steven Cooper Wayne & Peggy Cossairt Jeanne & Jim Costello Harold Coster Jeff Costlow David S. Covert Bruce Cowan Leslie & Janet Cox Michael Coxen Brent Creelman Thomas Cromwell Karen Crouse & Maureen Huff Stacey Crumbaker & Jeff Rodriguez Dottie Curren Dan Curry Chris Curtis Don D'Alessandro The Dahl/Wood Family Dan I. Daniels Bill & Marlene Davies Jean Davies	Brandon & Shannon Davis Jan Davis & Kaci Cronkhite Toni Davison & Susanne Feller Peter de Arteaga Daniel Decker Karen & Tony DeLorenzo Sandy Dengler Jim Denovan Willean Denton Hornbeck Tim Derry Kate Deslauriers Larry Dewey Jill & O. David Dickson Denis Dignan Dusty Dillion Jeanne & Vic Dirksen Sarah Dore Lawrence & Barbara Douglas Daniel & Ann Dow Ryan Downs Darvel Earl	Joseph Earsley Don & Dalene Edgar Michael Effler Peter D. Eikenberry, Sr. & Carol M. Eikenberry R. Joseph Eisele Bob Engel Harry & Janet Erl William & Sherry Evans Linda & Graham Evans Jim Evans Sarah & Owen Fairbank Robin Farrand & John Rogers Trygve Faste Lawrence Fay & Martha Ashman Gary & Joanna Ferguson Charles Ferguson III Ferino's Pizzeria William Ferry Keith Fetterman Dr. Joel Finlay Jim Fischer	Andrew Fiske & Calah Tenney Michael Fleming Henry Fly & Freida Fenn Peter Ford David Foster Smith Stephen & Barbara Foxman John R. & Susan J. Frank Marilou Frary Gary & Nancy Frederick Adele & Mark Freeland Keri French & Christopher Bricker Matthew Frick Steve Froggett Rod Fuiten Fritz Funk & Gail Miller Gene Fusch Sally Gadow Ted Gage & Janet Roberts	Kimberly & John Gallagher Gerald & Kym Gardner Ellise Gardner Chet Gardner Ken Gentil Brian Genung Jeff & Martine Gibbons Bill Gibbons Jean Giedt Larry Gill David Gilmour Stephen Gimber & Pamela Buchard Ted Goble Imants Golts Gwen Goodbee & Bill Ruth David Gray Josh & Carol Greene Graham & Kathryn Greene Dale Grooms & Debra Ellers Paul Grun Daniel Grünbaum	Peter Guerrero Thomas Gunby Gary S. Gunderson Helen Gunn & Michael Morrow Diane Haas Steven Habersetzer Philip & Lisa Haenen Barb & Paul Hager Don Hall Al & JoAnn Hamilton David F. Hamilton Jerry Hamm Matt Hanbey Rich Hanenburg Lucy & Charlie Hanson Heather Harbin Judy Harding Elizabeth Harpold Larry Harrell Kim & Bret Hart Ken Hauenstein Michael A. Hauser Matt Hawkyard Ron Hayes & Melinda Bryden	Henry & Elizabeth Hazen Sally Helman Cray & Lizbeth Henry W.C. Henry Laura Higgins Jeff Highbarger & Abbie Doll Michael & Roberta Hilbruner Lin Hines Don & Vicki Hinrichsen Patrick Hinton & MaryAnne Young Steve Hinton Linda & Mike Hitt Tim Hoehn & Edit Serfozo Lee Hoffman Scott Hoggarth & Micki Harrison David & Elizabeth Holland Mike Horsfall John Hostevedt & Therese Reilly Nancy Houghton	Leslie & Tom Howland Joe Hubert Beckie Huckriede Guy Hupy & Linda Woodson Eric Hvalsoe Chuck Iffland Ray & Sis Irons Lisa Irwin & Dean Holmes Kris & Meghan Iverson David L. Jackson Andrew Jacobs Dan Jacobs Neil Jacobson Marcy Jaffe & Michael Connell Janet Jenkins Alec & Leslie Jensen Katherine Jensen Paul Jensen Gary Jessen Linda Johnson Brian Johnson Carole Johnson Matt Johnson Douglas Jones	James Jones Alan Jones Eric & Carol Jorgensen Michael & Sue Jostrom Conchita & Luis Julia Charley & Liz Kanieski Jeremy Katich Sara Katz Leah Kefgen Capt. Gary Kelfner William & Billie Kelly Lou Kelly Michael J. Kennedy David Keogh Harvey & Dana Kerstein Bill Kesel Stephen Kessler & Alma Wong Larry Kimble, Jr. & Louise Bettner Robert & Robin King Douglas King & Robin Stanton Jenna Kinghorn & Morgan Conrad	Ed Kirkpatrick Chris T. Kleinfelter Chris Kluck & Erin Root Tom Kohrs & Cary Purvis Mark Koller & Vanessa Cass Kris Krusemark Michael & Ron Kubec Elaine Lachlan Steve Lampert & Amanda Webby Tim Lang Richard & Ann Lang Cathy Langley in Honor of Patty Langley & Van Hope Ellen Larkin & Dan Packard Angelina Larsen Jeff Larson Birger Larssen David Lawrence & Sally Funke Lawrence John & Jane Lebens Karen Lebens Jennifer Lee Andrew Lemmer	Mark & Jennifer Leonard Bertram Levy DaWayne Liebe Leslie Lincoln Russ & Becky Lindquist Patricia Lindsay Adrian Lipp Laurie Liske Richard & Marie Little Abigail & Alex Little Will Litzler David Logue Barry Loney Dominica Lord-Wood Robert & Nancy Lottman Eric Lovett Dennis & Barbara Lubert Terry & Polly Lyle John & Sharon Lynch James Mac Kenzie Michael & Nancy Machette Douglas MacLachlan
---	---	--	---	---	---	---	--	--	---	--	---

Don MacMillan	Joy McDonald	Grant Morris	Peter Olesen	Isabelle & Gordon	Ann & Patrick	Judie Romeo	Charles & Vicki	Stanford Siver &	Norm & Wendy	William & Margaret	Marci Van Cleve
Tony Magee	Kevin & Bethany	Tim & Harline Moyer	Bill Oliver	Phipps	Raymond	Ted G. Rose	Schroeder	Caitlin Catley	Stevens	Taylor	Dorothy Van Ness
Dick Malin	McDonald	Karli Mueller	Vern Olsen	Chris Pierson & Jamie	Tim Reagan	Dave Roseberry	Dick Schuettge	Lon Smith & Katie	Janet Stevenson	Jim Taylor	Peter Van Sickle
Roger & Dawn Mann	Michael McKay	Tom Muir & Carol	Gabe & Robin	Barnes	James & Roni	Mindy Ross	Marc & Sue Schultz	Holmes	Jeff Stiern	Pamela Teagarden	Scott & Tessie
Claude & Zan	Kelly McLaughlin &	Dapogny	Ornelas	Donald Pinter	Redman	Bill Rothert & Macy	Linda Schwartz &	Neal & Terry Smith	Dick Stivers	David & Leigh Teece	VanHoff
Manning	Ron Wheeler	John Munroe	Steve & Diane Orr	Brad & Jackie Ploof	Tom & Susanne	Galbreath	Julie Gertler	F. Jay Smith	Terry & Barb Stoesser	The Seattle Foundation	Scott Veirs
Stephen & Barbie	Jim Medley	John Munson	David Osinki	Mitchell Poling &	Regan	Trudy Roush	Eric Schwartz &	Gary Smith	James Stone & Linda	Carla Thomas	Todd Versaw & Myla
Marcoe	Wayne & Marlene	Carolyn Myers	Dr. Katherine	Sandra Smith-Poling	Andy Reynolds	G. Rowell & S. Steen	Catherine Mullin	Paul & Catherine	Devine	Michael & Letitia	Causing
Jayne & Joe Marek	Meier	Terry Myhre	Ottaway	Kathy Pool	Leighton Richardson	Melanie Rozek	Michael Scott	Snider	Mike & Jae Storms	Thompson	Linda Volz
Saia Mark	Whitney Meissner	Pat Nahan	Janet Palmer	Port Townsend Food	Dean Rienstra &	Bob Ruch	Timothy Scott	Maryly Snow	Charles Stout	Joe Titlow	Bill Wack
Wayne Marmon	Charles & Linda Merz	William Nance &	Will Patric & Aimee	Co-op	Kathy Gager	Paul Russell	William Scott	Bill & Julie Soderberg	Kitty Straton	Cary Tolman	Claudia & Joe Wagner
Nic & Peter Marshall	Ken Meyer	Marie Dressler	Boulanger	Joshua Porter & Nelia	Stan Riggle	Jill Russell	Al See	Eric Sorensen	Rebecca Street &	Jim Tolpin &	Dr. Peter Walford
Kirk & Elizabeth	Simon Miles & Emily	Brett Navin	Jeff Patrick	Swayze	Lorraine Rimson &	Sean Ryan	Jennifer Severin &	SOS Printing	Brian McDonald	Catherine Parkman	Cindy & Gerry Walsh
Martin	Bishop	Kathryn Neal & Geoff	James L. & Sarah	PT Shirt Company	Gwen Mathewson	John Sabella	John Juiano	Laura & Henry Souza	Rick & Diane Strollo	Torolf Torgersen	Ben & Deb Walsh
Manuel & Christie	Sue Milligan	Dickgeiser	Patton	Len & Lise Pugsley	Joanne Rittmueller	Salesforce Foundation	Jennifer & Jeff Sharp	Dana Spear	Karen Sturnick &	Court Touwslager	Michael & Karin
Martinez	Tim Minter	Greg Nelsen	Monte Paulsen	Tom Putnam	Tom Robb	Matching Grants	David & Charlea	Jan Sprague	Elizabeth Andrews	Jay Towne	Walsh
Keith Marzan	Nora Mitchell	Linda Newberry &	Greg & Carol	Joan & Tim	Diana Robbins	John Sandberg	Sherman	John Sroufe	Carole & Denny	James Traband &	Wendy Warnick
Kelly Matlock &	John J. Mitchell	Rico Ruble	Paulson	Quackenbush	Joyce Roberts-Garbo	Leland Sandifur	Philip & Kathy	Bill Stabile	Sullivan	Casey Burke	Pat & Sue Waters
Cecily Hahn	Carol Anne Modena	Linda & Dan	Joanie Pearson	Charlene Quandt	Peter Robinson	Carl & Carole	Shipman	Peter Stanley	Tom Suplee	Paul Traci	Terry Watness
Kim Matthews	David & Renee Moe	Newland	Janice & Ollie	Jim Quarles	Catharine Robinson	Scandella	Samuel Shusterman &	William Stanley	Terry & Dee Sweeney	David Trapp	Chris & Rebecca
Mack McAdams	Marcus Moellendorf	Grant & Diane	Pedersen	Bob & Jan Quick	Douglas & Pat	James Scarantino &	Gary P. Stoner	Sandra Stapleton	Richard Talbot &	Greg Treece	Weber
Emily McArthur	Steve Mohler & Julie	Newman	Roy & Kathie Peeler	Christopher Quint	Rodgers	Kara Kellogg	Tim Simonds & Kerry	David Starkweather	Colette Kostelec	Charles & Virginia	Roger Weeks
Raymond & Betty	Jakubovic	Dwight Nicholson	Jules Petrisans	Steven & Ann Raab	Curt & Carol Rodin	Michael Schacht	Simonds	Markus G. Stein	David & Miriam	Tribe	Eric & Barbara
McCabe	Victoria Molinarolo	Melissa Nielsen	Holly & Matthew	Russ Radcliffe	Charles Rogers	Steve Scharf	Dale Simonson	Raymond & Nancy	William Stanley	Richard Tucker	Weissman
Sheldon McClafflin	Cleveland Molsberry	Edel O'Connor	Petta	Shelly & Jeff Randall	Jerry & Sandy	Jean Schlinger & Dan	Gordon Sims &	Sandra Stapleton	David Starkweather	Doug Turner	Bronson West &
Barb McColgan &	Pam Moore & Mike	Mark O'Neill	Luzi Pfenninger	Lewis Randall	Rogerson	Hines	Sandy Donnen	David Starkweather	Markus G. Stein	Joan Vader	Marian Birch
Ken Pastore	Josephson	Shelley & Ted	Marda Phelps	Gloria Randall	Seth Rolland & Me'l	Dennis Schosboek	Ralph J. Sims	Ed Sterling	Raymond & Nancy	Doug & Abbie	Lloyd Westbrook
Miles McCoy	Leslie Morris	Ockenden		John Rawlings	Christensen			Anne Steurer	Talley	Van Lelven	

Dorothy & Mark Westlund  
James Whalen  
Jane White & Nigel Dickens  
Keith & Catherine White  
Rick White & Marcia Smith-White  
Kenneth White & Samantha Macintyre-White  
David White  
Darren Wiese & Susan Clare  
Peter Wilcox  
Arthur M. Wilson  
David Winspear  
Ernie & Erica Wisner  
Elizabeth Worden  
Bob Wright & Tammy Smith  
Jimi Wright  
Leon Wurzer  
Michael Yates  
Gerald & Natasha Young  
Greg & Karen Zima

Kent & Paula Zimmerman  
Dale Zumfeld  
**IN-KIND DONORS**  
Larry & Donna Coffey  
Kristen Dean  
Stephen A. Douglas  
Barbara Buck Emerson  
Bob Farrell  
Len & Katy Friedel  
Roger Hagan & Lynn Marlow  
Matt & Tara Henery  
Chelcie & Kathy Liu  
Don Mathrole  
Craig Muma  
Pippa's Real Tea  
Erik Pratt  
Peter & Susan Risser  
Cheryl Scott  
Rick Segal  
John Shelton  
Carl & Sue Sidle  
James Sleznick  
Jeanne Spencer  
Dick & Mare Tietjen  
Len & Joanne Tyler

Richard Sidney Uhinck  
Libby Urner Wennstrom & Erik Wennstrom  
Mary Ann & Vince Verneuil  
Lisa Vizzini & Dan Kulin  
Kathy Whitman  
Dan Wiggins  
Lee Woods  
**PROGRAM PARTNERS**  
CedarRoot Folk School  
Centrum  
Chesapeake Light Craft  
Chimacum School District  
Community Boat Building Project  
Crawford Nautical School  
Grain Surfboards  
Gray Wolf Ranch  
Jefferson Community School  
Jefferson County YMCA

Jefferson Marine Resource Committee  
Northwest Interscholastic Sailing Association  
Northwest Outward Bound School  
Northwest School of Wooden Boatbuilding  
OCEAN (Opportunity, Community, Experience, Academics, Navigation) Program  
Port Townsend Food Co-op  
Port Townsend Marine Science Center  
Port Townsend School District  
Pygmy Boats  
Quilcene School District  
Robert D'Arcy Marine Services  
Schooner Martha Foundation  
Scamp Camp  
Sea Scouts

# MARITIME LEGACY CIRCLE & PILOTHOUSE ASSOCIATION

## MARITIME LEGACY CIRCLE

Bill Chapman‡  
Estate of Frank Dameron  
Bonnie Erickson  
Estate of Dorothy Fowler  
Gary W. Kennedy  
Estate of Joanna Loehr  
Robert & Nancy Lottman  
Kris Morris  
Dick & Mare Tietjen  
Herb Weissblum  
Garry & Jamie Wohlgemuth

## PILOTHOUSE ASSOCIATION

Bill Chapman‡  
Gary & Gay Eisenberger  
Joe Finnie  
George & Ann Fisher  
Foss Maritime  
Peter Geerlofs & Glenda Hultman  
Roger Hagan & Lynn Marlow  
Jim & Mary Hirshfield  
Howard & Suzanne Learned  
Ed & Laura Littlefield  
Chelcie & Kathy Liu  
Miller/Hull Partnership  
Stuart Mork & Laura Cooper  
Steve & Kelley Oliver  
Stig Osterberg  
Jock & Sonchen Patton  
Jerry & Penny Peabody  
Puget Sound Pilots

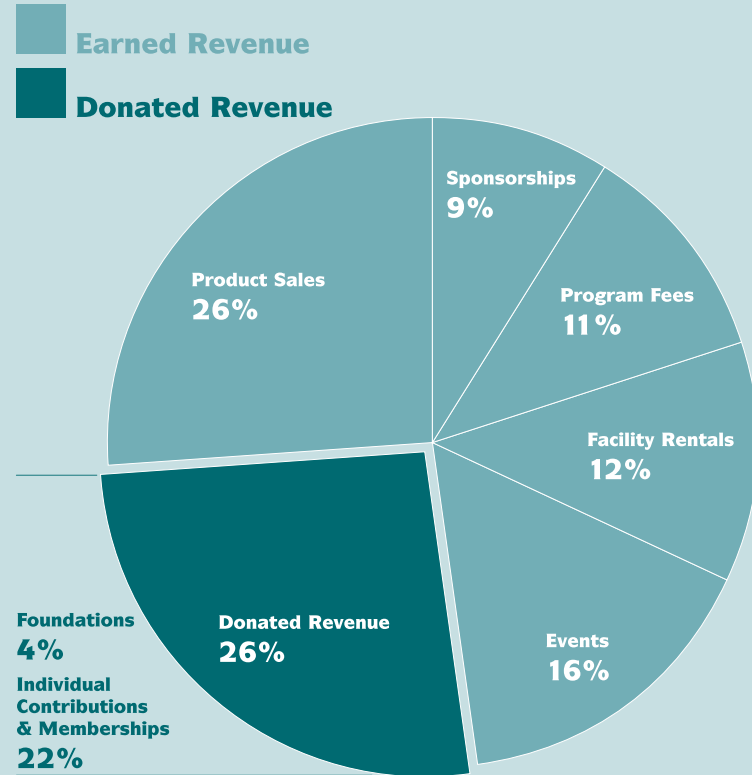
Nick & Libby Reid  
Rodney Paul Rochelle  
Michelle Sandoval & Marty Gay  
Dick & Anne Schneider  
Brent Shirley  
Alex & Elena Spear  
Jim & Nelly Tretter  
Mary Ann & Vince Verneuil  
Herb Weissblum  
Brad West & Carla Main  
Sharon & Phelps Witter  
Judith & Emmet Wolfe

*Pilothouse Association donors pledge or give outright \$10,000. They also collectively serve as an informal advisory committee that helps the NWMC chart a course toward a sustainable future.*



**FINANCIALS, BOARD &  
ORGANIZATION**

**PRE-AUDIT  
SOURCES OF OPERATING CASH 2015**



**PRE-AUDIT  
REVENUE 2015**

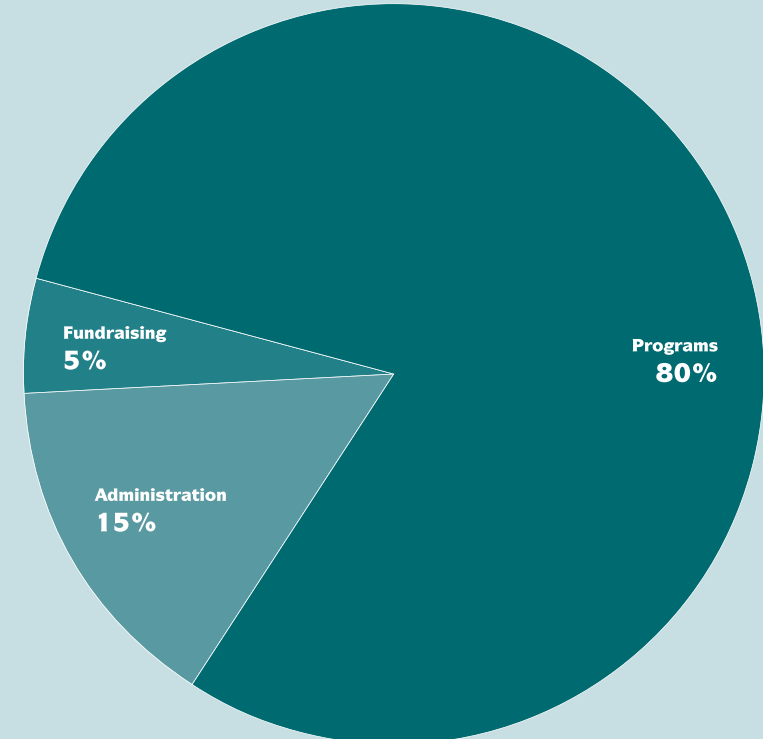
Events	\$317,467
Facility Rentals	\$242,538
Product Sales	\$511,914
Program Fees	\$215,998
Sponsorships	\$181,287
Foundations	\$502,098
Individual Contributions & Memberships	\$423,738
Boat Donations & In-Kind Gifts	\$1,073,984
<b>Total Revenue</b>	<b>\$3,469,024</b>
Cost of Goods	\$294,973
<b>Gross Profit</b>	<b>\$3,174,051</b>

**PRE-AUDIT  
EXPENSES 2015**

Events	\$197,842
Maintenance & Moorage	\$61,154
General Expenses	\$49,507
Grants	\$66,703
Insurance	\$48,413
Interest & Processing	\$70,019
Facility & Equipment	\$587,589
Marketing	\$72,673
Occupancy	\$93,346
Program Expenses	\$18,907
Staff, Volunteers & Professional Fees	\$1,080,526
Supplies	\$29,742
Taxes	\$46,268
<b>Total Expenses</b>	<b>\$2,422,689</b>
<b>*Net Income</b>	<b>\$751,362</b>

\*Results do not include Maritime Discovery Schools Initiative

**PRE-AUDIT  
FUNCTIONAL EXPENSES 2015**



**PRE-AUDIT  
BALANCE SHEET 2015**

**ASSETS**

Current Assets	
Checking & Savings	\$206,314
Accounts & Pledges Receivable	\$442,810
Other Current Assets	\$29,048
<b>Total Current Assets</b>	<b>\$678,172</b>
Fixed Assets	\$15,503,861
Long Term Pledges	\$168,479
Endowments	\$31,396
Funds Held for Debt Reduction	\$442,948
Other Assets	\$303,451
<b>TOTAL ASSETS</b>	<b>\$17,128,307</b>

**LIABILITIES & EQUITY**

Liabilities		
Current Liabilities		
Accounts Payable	\$83,065	
Credit Cards	\$21,382	
Other Current Liabilities	\$332,133	
<b>Total Current Liabilities</b>	<b>\$426,580</b>	
Long Term Liabilities	\$411,895	
<b>Total Liabilities</b>	<b>\$848,475</b>	
Equity	\$16,279,832	
<b>TOTAL LIABILITIES &amp; EQUITY</b>	<b>\$17,128,307</b>	

**BOARD OF DIRECTORS**

Steve Oliver,  
President  
Kris Morris,  
Vice President  
Peter Geerlofs,  
Treasurer  
Roger Hagan,  
Secretary  
Mark Bunzel  
Piper Dunlap  
Joe Finnie  
Richard Firth  
Blaise Holly  
Patrick M. Irwin  
Gary Kennedy  
David King  
Stuart Mork  
Michelle Sandoval  
Lynn Terwoerds  
Herb Weissblum

**BOARD EMERITI**

Carlyn Stark  
Jim Whittaker

**LIFETIME MEMBERS**

Aletia Alvarez  
Mark Beaufait  
Bruce Benedict  
Jon Benedict  
Bill Brandt  
Russell & Svane  
Castner  
Jim "Daubie" & Mary  
Daubenberger  
Jan Dennler  
Anita & Laurie Dowsett  
Jim "Kiwi" Ferris  
John & Martha Foley  
Jan Hanly  
Carol Hasse  
Pete Helsell  
Bill & Penelope  
Higgins  
Paul & Carol Lawrence  
Vivian Lematta  
Scott & Colleen  
Swantner

**STAFF** (April 2016)

Jake Beattie,  
Executive Director  
Hailey Beres  
Kim Brooks  
Chris Dewees  
Daniel Evans  
Sonia Frojen  
Rick Heim  
Nancy Israel  
Eileen Johnston  
Scott Jones  
Hallie Kopald  
Catherine Loporati  
Len Maranan-  
Goldstein  
Joy McDonald  
Wil Racicot  
Shirley Reynolds  
Jared Scott  
Susanna Sharp  
Carolyn "Ace" Spragg  
Barb Trailer  
Jef Waibel  
Erik Wennstrom  
Alicia Witham

**PHOTOGRAPHY CREDITS**

Janeen Armstrong  
Jeff Eichen  
Myron Gauger  
Victor Judd  
Nic Lehoux  
Nick Reid  
Mark Saran  
Jared Scott  
Carolyn "Ace" Spragg  
Emmet Wolfe

**WRITTEN & DESIGNED BY**  
Northwest Maritime  
Center Staff

**PRINTED BY**  
The Printery,  
Port Townsend, WA





**THANK YOU.**

NORTHWEST MARITIME CENTER  
431 WATER STREET  
PORT TOWNSEND, WASHINGTON

360.385.3628  
NWMARITIME.ORG

*The mission of Northwest Maritime Center is to engage and educate  
people of all generations in traditional and contemporary maritime life,  
in a spirit of adventure and discovery.*